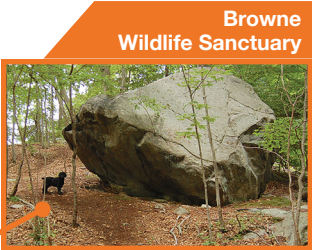


LAND TRUST PROPERTIES



New Canaan Land Trust

www.NewCanaanLandTrust.org

PROTECTING OPEN SPACE

The New Canaan Land Trust was founded in 1967 to promote the protection of open space in New Canaan, CT. Since then, the Land Trust has diligently worked to protect approximately 400 acres of forest, meadow, and wetland, and actively stewards this land by creating and restoring wildlife habitat, building trail systems, and removing invasive species.

These Land Trust preserves not only create unique opportunities for passive recreation, but help to protect drinking water quality, reduce flood risks, conserve habitat for local flora and fauna, and maintain the rural character of New Canaan.

With your support, the New Canaan Land Trust will continue to grow and care for its network of protected open space.

www.NewCanaanLandTrust.org | info@NewCanaanLandTrust.org | P.O. Box 425, New Canaan, CT 06840 | 203-972-1270

SUPPORT YOUR LAND TRUST

- 1 **Become a member** of the New Canaan Land Trust and help us fund land acquisition and stewardship projects
- 2 **Donate land** or a conservation easement to help grow our network of protected open space
- 3 **Volunteer** your time to help with stewardship projects, trail maintenance, marketing, and more

The New Canaan Land trust is a 501(c)(3) non-profit, and all donations are tax-deductible

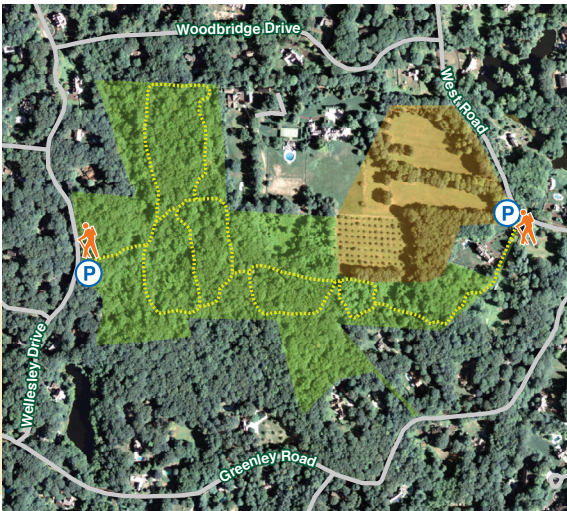


FEATURE PROPERTIES

WATSON-SYMLINGTON WOODLANDS

- **Access:** Main trailhead and parking area on Wellesley Drive, just north of Sherwood Lane. Secondary entrance with small parking area on West Road between addresses 226 and 246
- **Size:** 42 acres • **Trail length:** 1.6 miles
- **Protected in:** 1984, 1996

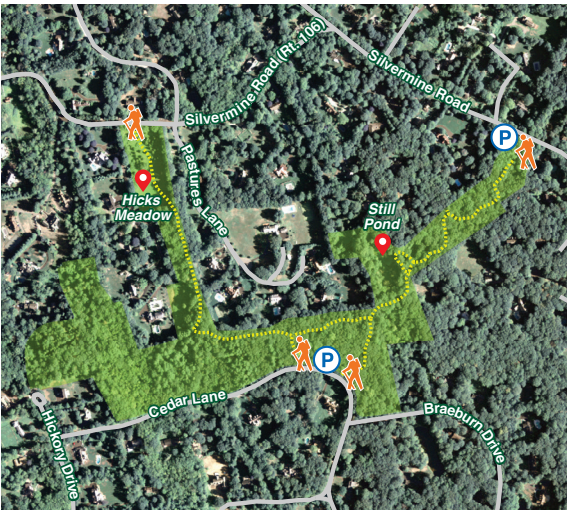
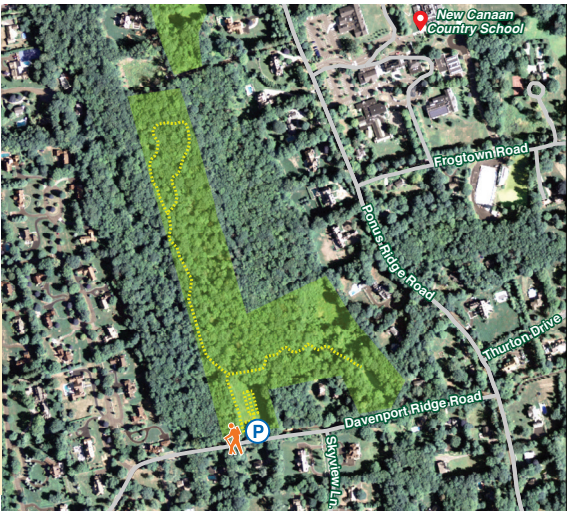
With its winding paths and towering tulip poplars, this is one of the best hiking locations in New Canaan. From the northeastern edge of the property, visitors can look over an apple orchard, on which the Land Trust holds a conservation easement.



COLHOUN MEADOW & WOODLANDS

- **Access:** Parking area on north side of Davenport Ridge Road, across from address 203.
- **Size:** 21 acres • **Trail length:** 0.7 miles
- **Protected in:** 1974

The former site of a dairy farm, this property is now home to a pollinator meadow with a beautifully restored stone wall along Davenport Ridge Road. Trails lead north to a beech-dominated woodland, and west to a small pond.



STILL POND SILVERMINE PRESERVE

- **Access:** Two trailheads located on Cedar Lane, along the bend and with room for parking. A third trailhead and parking area located at 763 Silvermine Road, and a fourth trailhead located on Silvermine Road near Pastures Lane.
- **Size:** 44 acres • **Trail length:** 1.1 miles
- **Protected in:** 1952, 1970, 1986, 1990, 2014, 2017

Home to one of our newest parcels, the 7-acre Fowler preserve, visitors can walk through woodlands and meadows as they make their way to Still Pond. Local residents of the pond include herons, egrets, turtles, bullfrogs, and more.



LIVINGSTON-HIGLEY MEADOW

- **Access:** Two trailheads and room for parking at the end of Apple Tree Lane.
- **Size:** 14 acres • **Trail length:** 0.5 miles
- **Protected in:** 1973 & 1974

One of our largest meadows, this site provides important habitat for pollinators and ground nesting birds. Combined with the restored stone wall, visitors get a glimpse of New Canaan's bucolic past.

BROWNE WILDLIFE SANCTUARY

- **Access:** Trailhead located at the intersection of Valley Road and Colonial Road, with parking at a pull off on Colonial Road.
- **Size:** 10 acres • **Trail length:** 0.6 miles
- **Protected in:** 1969

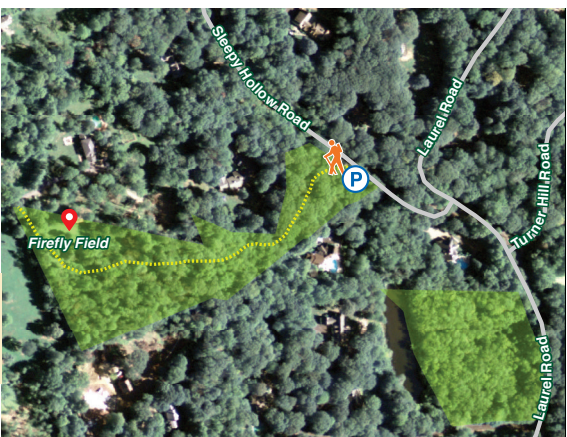
Interpretive signs along the trails of the Browne Wildlife Sanctuary educate visitors about the ecology, geology, and historic land-use of the site.



FIREFLY SANCTUARY

- **Access:** Trailhead and room for parking on Sleepy Hollow Road, approximately 200 yards after the intersection with Laurel Road.
- **Size:** 6 acres • **Trail length:** 0.25 miles
- **Protected in:** 1983 & 2015

Between June and July, visit the field in the northwest corner of this preserve to witness a magical display of fireflies.



LEGEND

- Land Trust Trails
- Roads
- Land Trust Properties
- Land Trust Easements
- P Parking
- Points of Interest
- Trailhead

VISITATION GUIDELINES

- Properties listed above are open dawn 'til dusk
- Dogs must be leashed at all times unless otherwise posted, and all solid waste removed
- Camping, campfires, hunting, and use of motorized vehicles is prohibited without written consent
- Leave no trace: take only pictures and leave only footprints